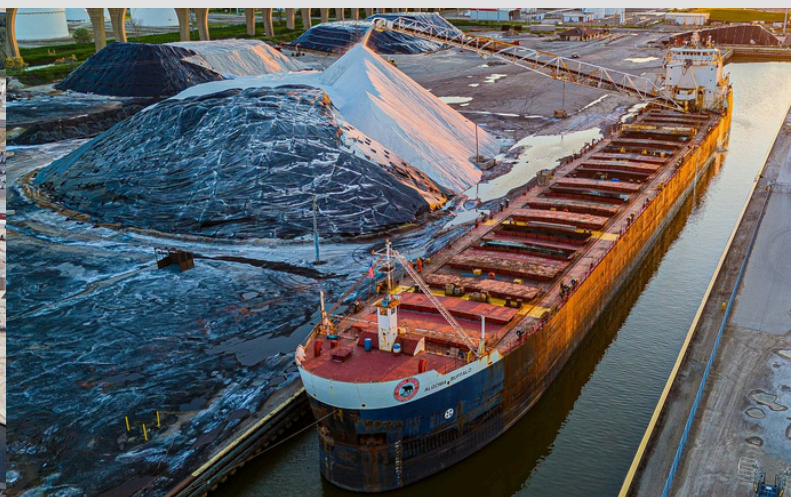


Green Bay WISCONSIN

Strategically located at the southern end of the Bay of Green Bay, an arm of Lake Michigan, the Port of Green Bay serves as a vital maritime gateway for Northeast Wisconsin. Its inland position allows direct access to the Great Lakes-St. Lawrence Seaway System, connecting regional industries to global markets. With its efficient intermodal connections and year-round terminal operations, the Port of Green Bay plays a critical role in regional economic development.



SERVICES OFFERED

Cargo handling
Stevedoring

EQUIPMENT

Quay cranes
Mobile harbor cranes
Grab-type ship unloaders
Gantry Cranes
Reach Stackers
Forklifts
Conveyor systems

TYPES OF CARGO

Bulk
Forest Products

INLAND CONNECTIONS

Rail:
Canadian National Railway (CN)
Highways:
Interstate 43
U.S. Highway 41

CONTACT US

solutions@logistec.com

LOGISTEC Stevedoring Inc.
600, de la Gauchetière O. 14th floor
Montreal (QC) H3B 4L2