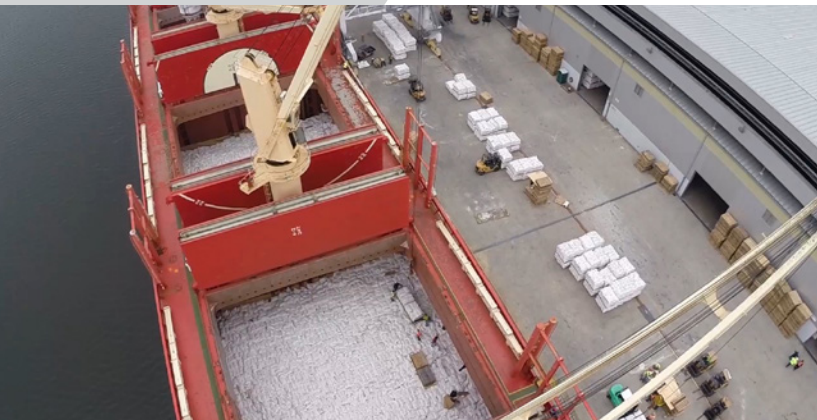
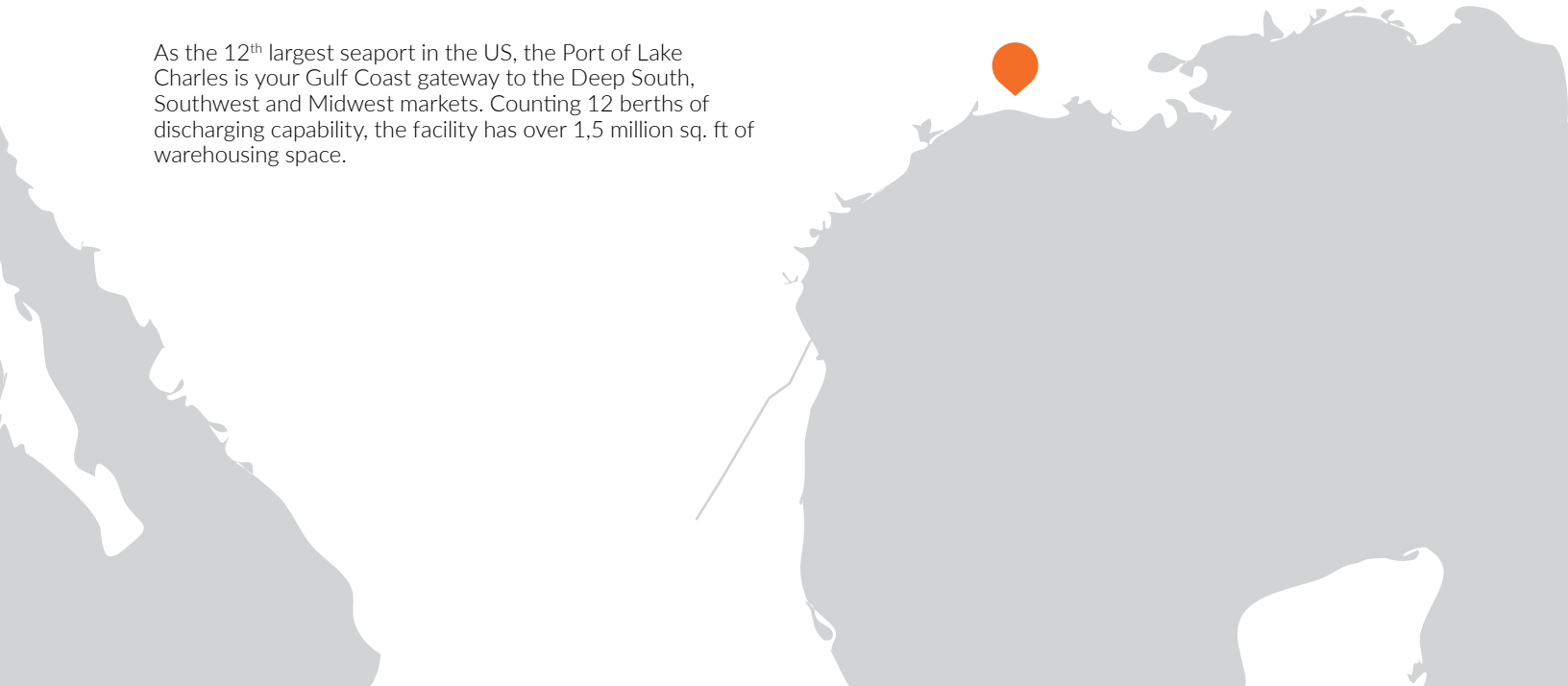


Lake Charles

LOUISIANA

LOGISTEC

As the 12th largest seaport in the US, the Port of Lake Charles is your Gulf Coast gateway to the Deep South, Southwest and Midwest markets. Counting 12 berths of discharging capability, the facility has over 1,5 million sq. ft of warehousing space.



SERVICES OFFERED

- Cargo Handling
- Stevedoring
- Outdoor Storage
- Warehousing
- Transloading
- Ro/Ro, Rail
- All-year navigation
- Direct discharge capabilities (truck, barges -with ship's gear)

EQUIPMENT

- Cranes available upon request
- Forklifts (capacities up to 36,000 lbs)
- Lifting Gear
- Ro-Ro ramp
- Loaders
- Additional items from our fleet can be mobilized upon request

TYPES OF CARGO

- Breakbulk
- Project Cargo
- Heavy Lift
- Out-of-Gauge
- Wind components
- Steel & Forest products
- Rice/bagged goods & other breakbulk cargoes
- Containers

INLAND CONNECTIONS

- Interstate Highways 10, 49, 20 and 55
- Railroad served by UP, BNSF and KCS

SALES MANAGER
Matthew Smolek
info@logistec.com

GENERAL MANAGER
Britton Miller
info@fedmar.com

LOGISTEC TERMINALS INC.
150 Marine Street, Building 200,
Suite C, Lake Charles, LA 70602
info@logistec.com