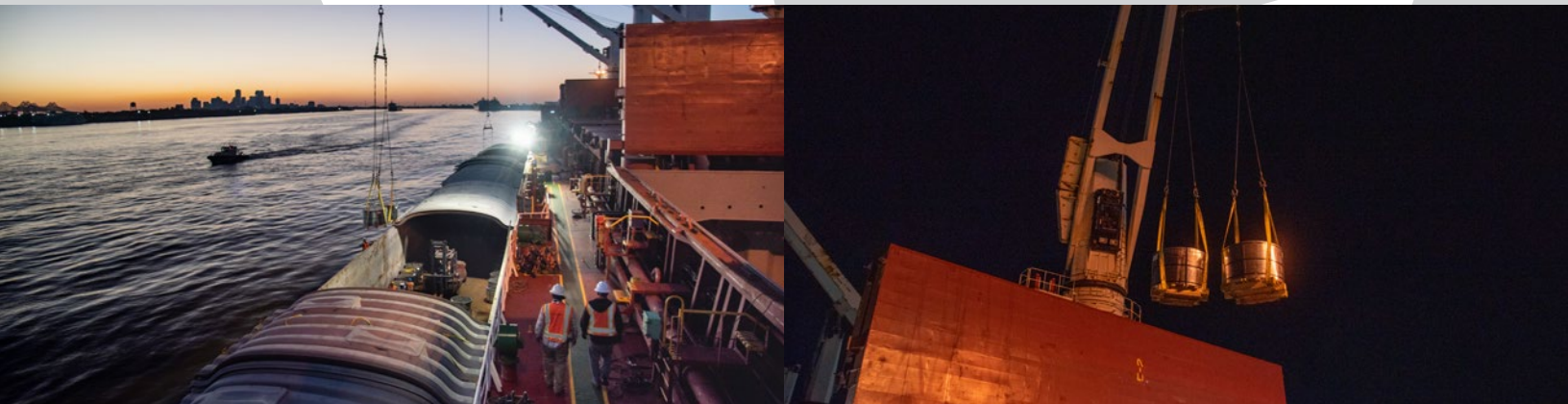


Alabo Street Terminal

NEW ORLEANS, LOUISIANA



The Port of New Orleans is a deepwater port located on the Mississippi river near the U.S. Gulf and offers customers seamless supply chain solutions from river to rail to truck. The Alabo Street Terminal is connected to Class 1 rail and highway systems and serves markets in the southern states and the U.S. Midwest, serving shippers from around the world.



SERVICES OFFERED

- Cargo handling
- Transloading
- Rail Car and Barge Loading/unloading
- Intermodal
- Warehousing
- Inside and outdoor storage

EQUIPMENT

- 275-Ton Crawler Crane
- Clamshell buckets
- Forklifts (5,000 to 66,000 lbs capacity)

TYPES OF CARGO

- Project Cargo
- Wind
- Bulk
- Break-bulk
- Steel commodities

INLAND CONNECTIONS

- Direct access to Highway LA 46 (St. Claude Avenue), near US Interstate 10
- On dock rail access serviced by Norfolk Southern Railroad

GENERAL MANAGER
Eric Alber
(504) 208-9051 Ext 2501
ealber@gulfstreammarine.com

GULF STREAM MARINE INC.
10000 Manchester St.
Houston, Texas 77012
info@gulfstreammarine.com