

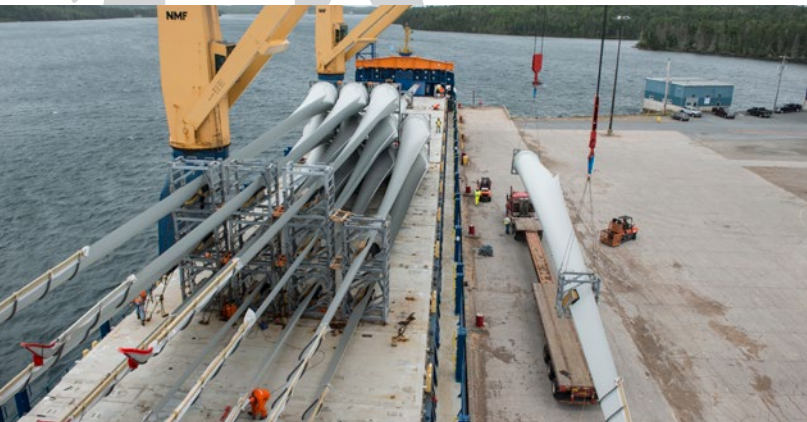
# Sheet Harbour

## NOVA SCOTIA

LOGISTEC

Logistec has helped make this picturesque facility a destination of choice for large, out-of-gauge project cargo, especially in the renewable energy sector. Some of the largest wind energy cargo in the Maritimes has made our terminal its place of call.

We also handle forest products, Arctic resupply shipments, and other types of bulk and break-bulk commodities onsite. This location offers large laydown area and flexible working hours to accommodate shippers and industrial clients from a variety of industries.



### SERVICES OFFERED

Cargo handling  
Stevedoring  
Warehousing  
Crossdocking

### EQUIPMENT

Cranes  
Forklifts  
Reach Stacker  
Additional items from our fleet can be mobilized upon request

### TYPES OF CARGO

Bulk  
Break-bulk  
Project cargo  
Heavy lift  
Out-of-gauge  
Wind energy components

### INLAND CONNECTIONS

Highway 224  
Highway 374  
Trans-Canada Highway

### SALES MANAGER

Jim Lambe  
(902) 422-7483  
jlambe@logistec.com

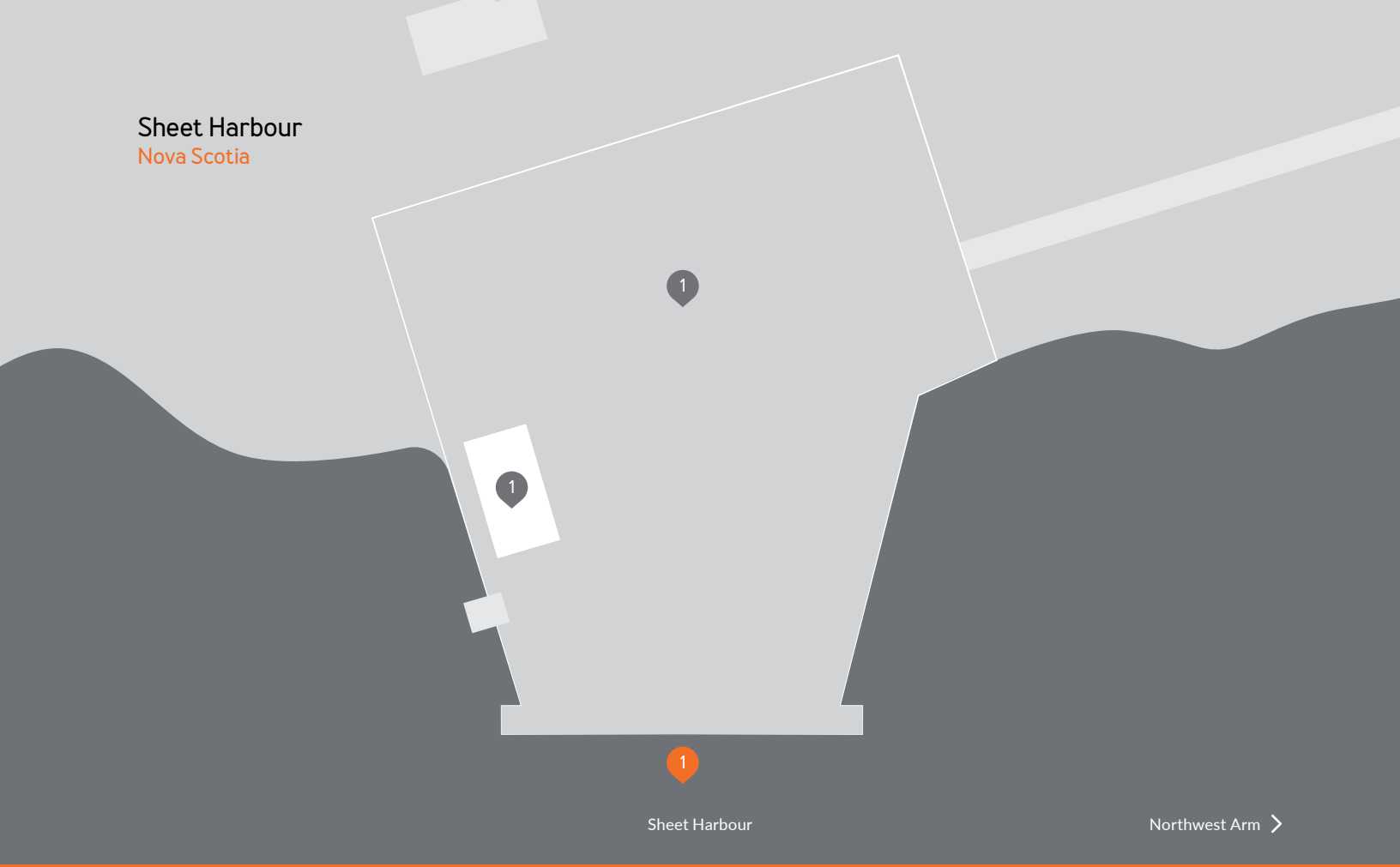
### OPERATIONS MANAGER

Anthony Steele  
(902) 422-7483  
asteel@logistec.com

### LOGISTEC STEVEDORING (NOVA SCOTIA) INC.

1096 Marginal Road, Suite 208  
Halifax, Nova Scotia B3H 4N4  
hfx-rates@logistec.com

Sheet Harbour  
Nova Scotia



Sheet Harbour

Northwest Arm >

Pier	Berthage		Storage		Notes
	LENGTH	DEPTH	INDOOR	OUTDOOR	
1	153 m 502 ft	10.3 m 34 ft	2,787 m <sup>2</sup> 30,000 ft <sup>2</sup>	12 acres + 40 acres adjacent terminal	Wide berth (36.5 metres) Load-bearing capacity of up to 3,000 psf High load-bearing capacity to accommodate oversized cargo

Please note that depth and draft specifications are approximate, without guarantee and subject to change.