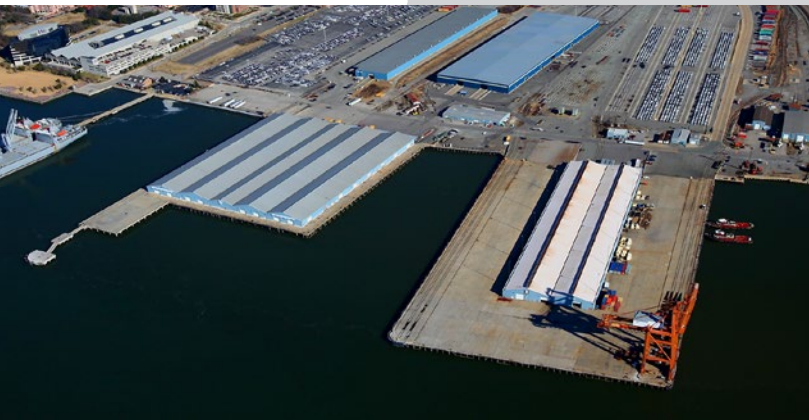


# Newport News VIRGINIA



CrossGlobe is a premier logistics service provider, specializing in transportation and warehousing at the Newport News Marine Terminal. Our facilities are connected directly to rail via CSX, with capacity for 26 railcars.

We can scale our trucking and transloading solutions to meet your needs, from a single shipment to your entire supply chain. In total, we have over 400,000 square feet of multi-commodity storage capacity, complemented by state-of-the-art inventory management technology.



## SERVICES

- Port logistics
- Drayage
- Trucking
- 3PL
- Indoor/outdoor transloading
- Crossdocking
- Warehousing
- Container stuffing/destuffing

## SERVICES (CONT.)

- Labeling/relabeling
- Roll repair
- Rewrapping
- Bundling
- Product weighing
- Online inventory management
- Container pool management
- Load planning services to maximize container weights

## TYPES OF CARGO

- General cargo
- Pulp and paper
- Lumber

## EQUIPMENT

- Forklifts with capacity up to 15,000 pounds
- Paper roll clamps
- Bale clamps

## CERTIFICATIONS

- Virginia ABC (Alcohol Beverage Control) licensed to transport beer and wine
- Bonded transportation provider

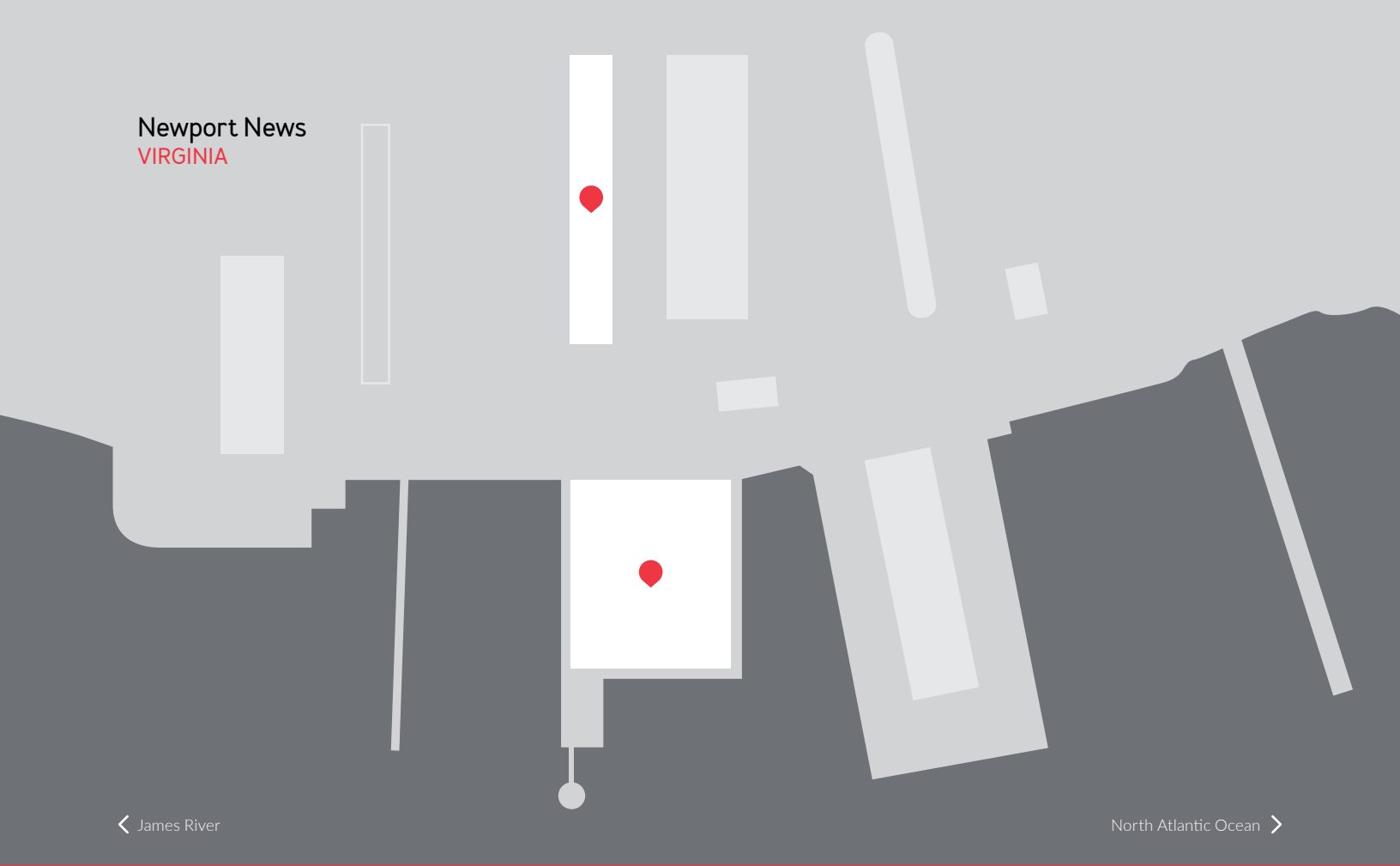
## INLAND CONNECTIONS

- Direct access to CSX rail, US Route 17, Interstate 664, and Port of Virginia container terminals (Norfolk)

**OPERATIONS MANAGER**  
Andrew Deveau  
info@crossglobebgroup.com

**CROSSGLOBE TRANSPORT, LTD.**  
Newport News Marine Terminal  
2500-D Warwick Boulevard  
Newport News, Virginia 23607

Newport News  
VIRGINIA



< James River

North Atlantic Ocean >

 Storage

Notes

INDOOR

32,516 m<sup>2</sup>  
350,000 ft<sup>2</sup>

Two facilities located at the Port of Virginia's Newport News Marine Terminal  
CSX rail sided, 26 railcar capacity  
25 loading dock positions  
22' to 26' ceiling heights  
Secure facility, fenced in with limited access and monitored by the Virginia Port Police