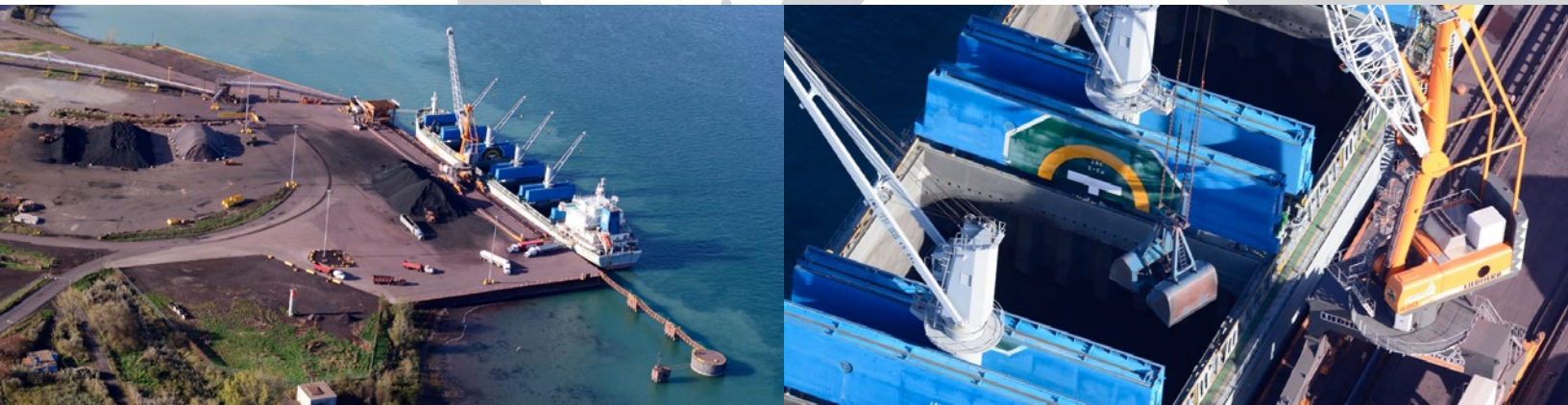


Contrecoeur QUÉBEC

LOGISTEC

Our Contrecoeur terminal is one of the most modern, efficient bulk-handling facilities along the St. Lawrence River. Known for its expertise in handling iron ore and fertilizer, Contrecoeur can also accommodate salt, bauxite, and coal, as well as project cargo and heavy lift. Recent upgrades include installation of a custom-made hopper and a new rail-mounted harbour crane.



SERVICES OFFERED

- Cargo handling
- Stevedoring
- Outdoor storage
- Bagging
- Inventory management
- Warehousing
- Indoor/outdoor transloading

EQUIPMENT

- Rail-mounted hopper
- Liebherr LPS 420 crane (with capacity of 120 metric tonnes in lift mode and 75 metric tonnes in grab mode)
- Covered conveyor system
- Dust collectors
- Paved laydown
- Additional items from our fleet can be mobilized upon request

TYPES OF CARGO

- Bulk
- Break-bulk
- Project cargo
- Heavy lift
- Out-of-gauge

INLAND CONNECTIONS

- Direct access to CN rail, Highway 20, Highway 30 and Route 132

SALES

George Di Sante
info@logistec.com

OPERATIONS MANAGER

Philippe Desgagnés
info@logistec.com

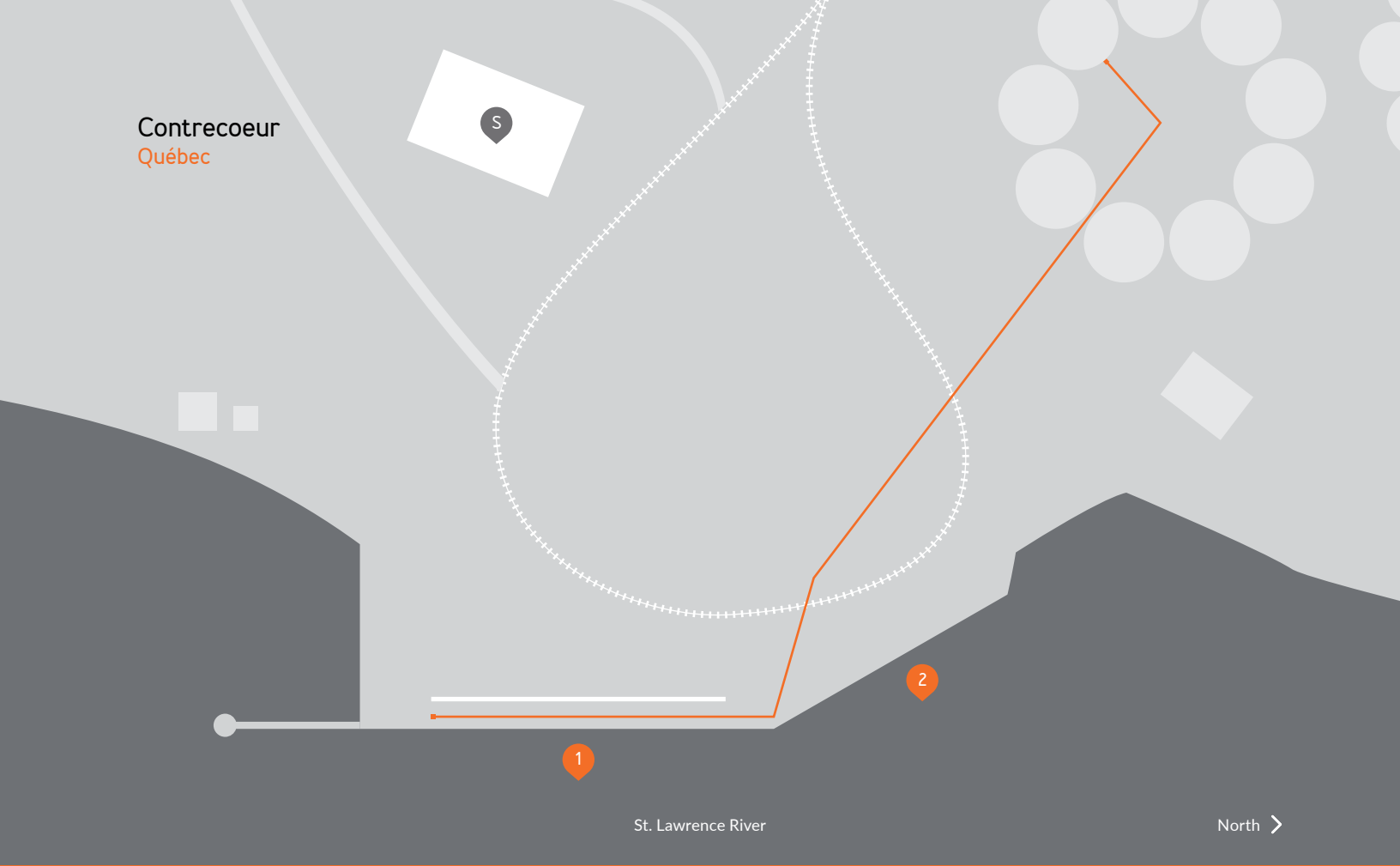
GENERAL MANAGER

Norman Desjardins
info@logistec.com

LOGISTEC STEVEDORING INC.

1920 Route Marie-Victorin
Contrecoeur, Québec J0L 1C0
info@logistec.com

Contrecoeur
Québec



Pier	Berthage		Storage	
	LENGTH	DEPTH	INDOOR	OUTDOOR
1	228.9 m 751 ft + mooring dolphins 77.7 m 255 ft	10.7 m 35 ft		7,796 m ² 3,915 ft ²
2	147.8 m 485 ft	6.1 m 20 ft		4,621 m ² 9,740 ft ²
Shed			3,750 m ² 40,365 ft ²	
Storage Pad				22,854 m ² 45,998 ft ²

Please note that depth and draft specifications are approximate, without guarantee and subject to change.

LOGISTEC