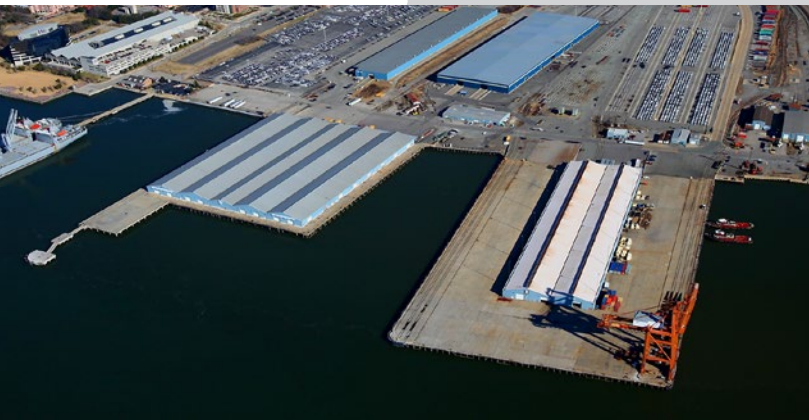


Newport News VIRGINIA



CrossGlobe is a premier logistics service provider, specializing in transportation and warehousing at the Newport News Marine Terminal. Our facilities are connected directly to rail via CSX, with capacity for 26 railcars.

We can scale our trucking and transloading solutions to meet your needs, from a single shipment to your entire supply chain. In total, we have over 400,000 square feet of multi-commodity storage capacity, complemented by state-of-the-art inventory management technology.



SERVICES

Port logistics
Drayage
Trucking
3PL
Indoor/outdoor transloading
Crossdocking
Warehousing
Container stuffing/destuffing

SERVICES (CONT.)

Labeling/relabeling
Roll repair
Rewrapping
Bundling
Product weighing
Online inventory management
Container pool management
Load planning services to maximize container weights

TYPES OF CARGO

General cargo
Pulp and paper
Lumber

EQUIPMENT

Forklifts with capacity up to 15,000 pounds
Paper roll clamps
Bale clamps

CERTIFICATIONS

Virginia ABC
(Alcohol Beverage Control)
licensed to transport beer and wine
Bonded transportation provider

INLAND CONNECTIONS

Direct access to CSX rail,
US Route 17, Interstate 664,
and Port of Virginia container
terminals (Norfolk)

SALES MANAGER

Robert Cave
(757) 952-0672
rcave@crossglobelogistics.com

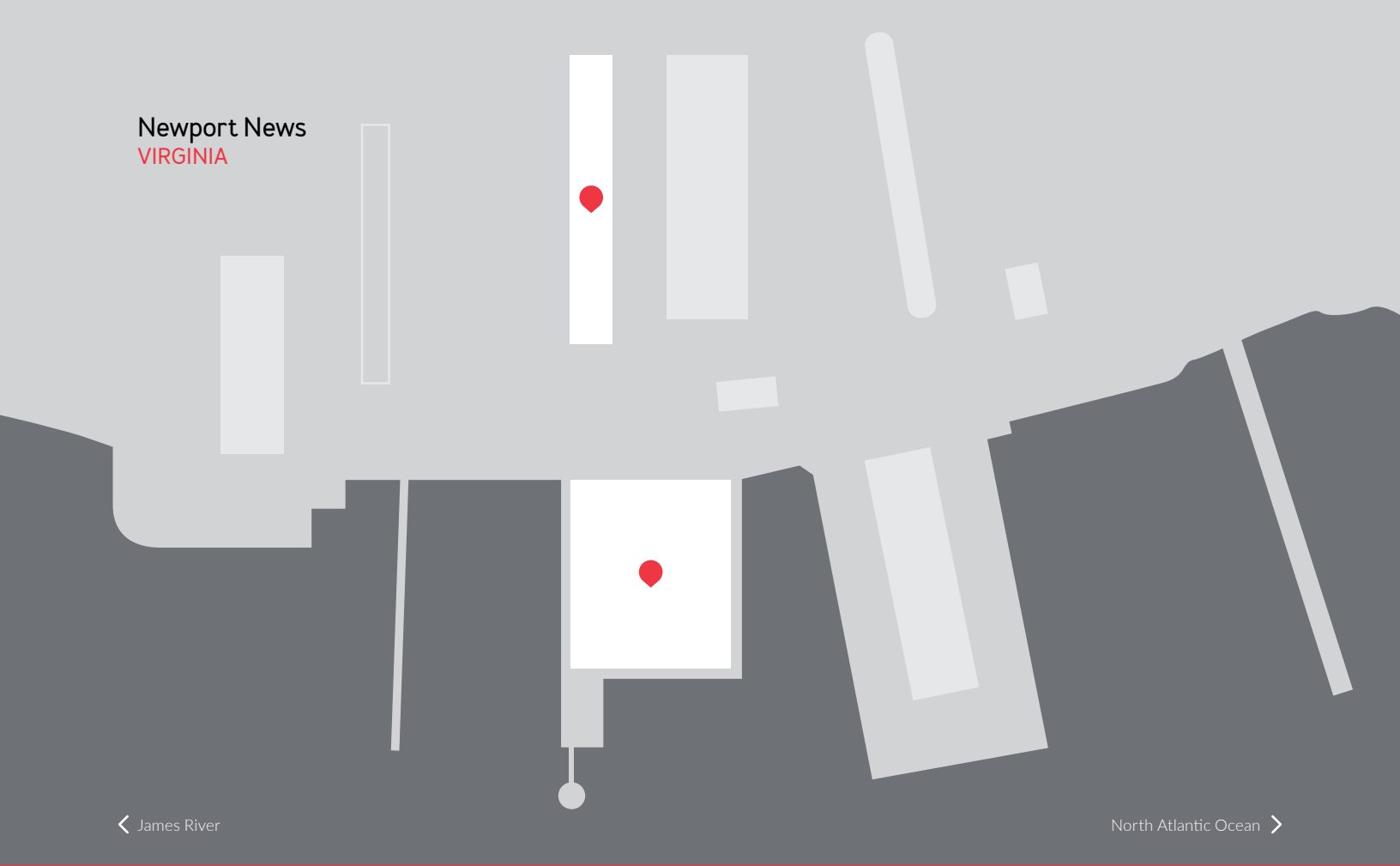
GENERAL MANAGER

Andrew Deveau
(757) 244-8169
jriddle@crossglobelogistics.com

CROSSGLOBE TRANSPORT, LTD.

Newport News Marine Terminal
2500-D Warwick Boulevard
Newport News, Virginia 23607

Newport News
VIRGINIA



Storage

Notes

INDOOR

32,516 m²
350,000 ft²

Two facilities located at the Port of Virginia's Newport News Marine Terminal
CSX rail sided, 26 railcar capacity
25 loading dock positions
22' to 26' ceiling heights
Secure facility, fenced in with limited access and monitored by the Virginia Port Police